

Village of Menomonee Falls, Wisconsin

Incorporated 1892

Menomonee Falls has transformed over the years from a small mill settlement into a local marketplace, a residential suburb and a major hub of the regional economy. As Menomonee Falls celebrates the 125th anniversary of its incorporation in 2017, the Village is taking stock of its rich history. This timeline highlights some of the many events and milestones that have shaped the Village as we know it today.

1830s The area is inhabited by the Chippewa people and other native groups who maintain seasonal camps near the Menomonee River

1836 Garrett Vliet maps the area around the Menomonee River, describing the series of falls as a "respectable cataract" – two years later he purchases 640 acres near the river



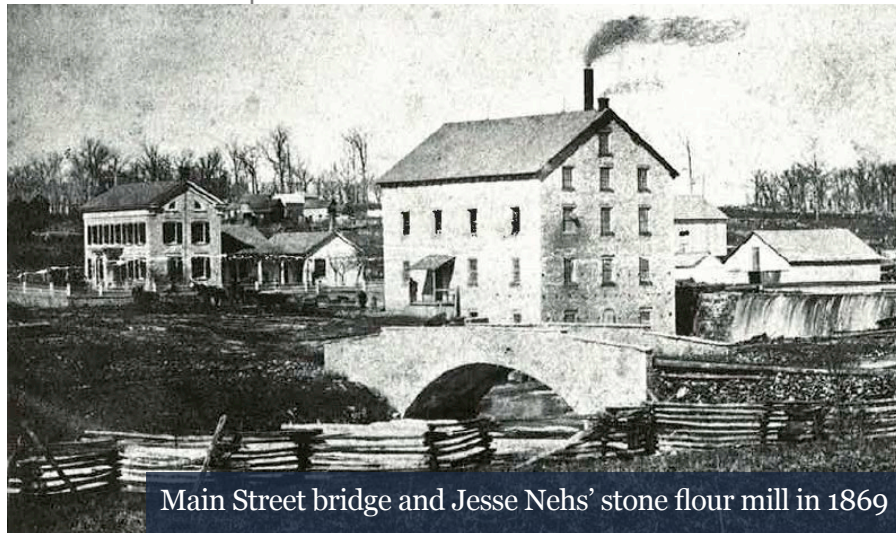
Garrett Vliet

1839 The Town of Menomonee is created by the Wisconsin Territorial Legislature. The first meeting of the Town of Menomonee is held in 1842 at William Hesk's inn near the present intersection of Appleton Avenue and Pilgrim Road

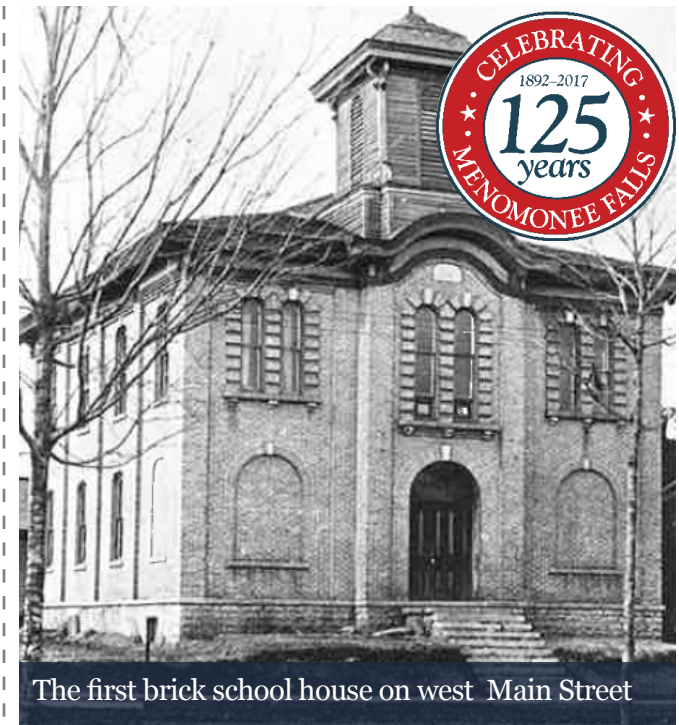
1845 Waukesha Road (Main Street) and Water Street are constructed improving access to the sawmill and growing cluster of homes and businesses along the Menomonee River

1850s Lands around the intersection of Fond du Lac Road (Appleton Avenue) and Waukesha Road are platted into a few dozen parcels and developed as the "Four Corners" commercial area

1851 The first wood frame school house is constructed in the settlement of Menomonee Falls on west Main Street – this structure (the first institutional building in the settlement) was moved to Old Falls Village Museum in the 1970s



Main Street bridge and Jesse Nehs' stone flour mill in 1869



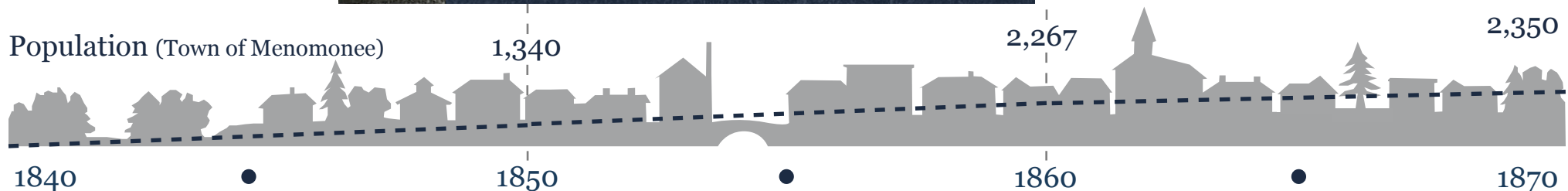
The first brick school house on west Main Street

1860s Emmanuel Evangelical Church, Methodist Episcopal Church and St. Anthony Catholic Church (Fussville) complete new church buildings, altering the Town's skyline

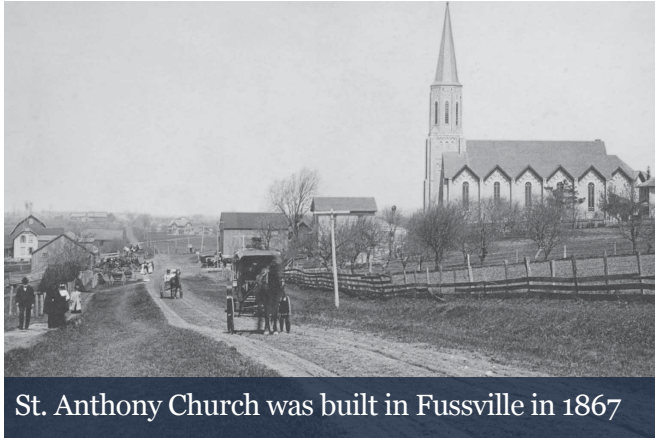
1867 A brick school house is built on the site of the former wood frame school – the new school accommodates up to 100 students and is heated annually with 10 cords of wood at a cost of \$25

1869 The Coates and Ostrander store is built on the southeast corner of the Four Corners – this building is now home to Nino's Italian Bakery

Population (Town of Menomonee)



Menomonee Falls Becomes a Village



St. Anthony Church was built in Fussville in 1867

1870s The Fussville settlement boasts a post office, stores, a blacksmith shop, several hotel/taverns, a brewery and several homes

1875 Sunnyside School is built at the corner of Menomonee Avenue and Main Street



Sunnyside School in 1910

1880 St. Paul's Evangelical Church (now St. Paul's United Church of Christ) is built with stone construction on Fond du Lac Road replacing the old wooden church building on the site – German language worship services continue at this church until the 1930s

1886 The new Eagle Hotel opens in Menomonee Falls – in later years the hotel became a well-known eatery, renowned for its all you can eat 75 cent family-style chicken dinner



The hotel hosted the first Village meetings in 1892

1887 Menomonee Falls records its first Village-wide plat map containing 117 parcels – the map includes the Village's first subdivision which was created to the northeast of the Four Corners when Jesse B. Nehs subdivided his farm in 1886

1890 The *Menomonee Falls News* is first published



Railroad service to the Village began in 1890

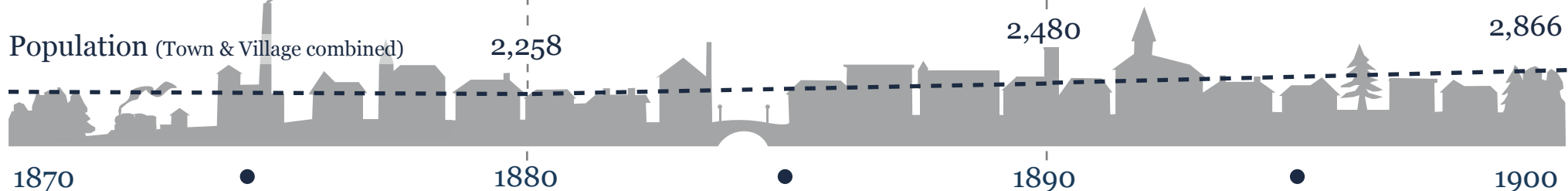
1892 On February 3rd, after a petition of support is signed by 497 area residents, the Village of Menomonee Falls is incorporated by the order of Judge A. Scott Sloan of the Waukesha County Circuit Court – the Village's population is estimated at over 500 and the land area is approximately 1 square mile

1894-95 The first Village Hall and Fire House are built and a new two story public school replaces the old brick school house

1896 The Wisconsin Beet Sugar Company begins operations on north Water Street and employs hundreds of seasonal workers



Village Hall/Fire House

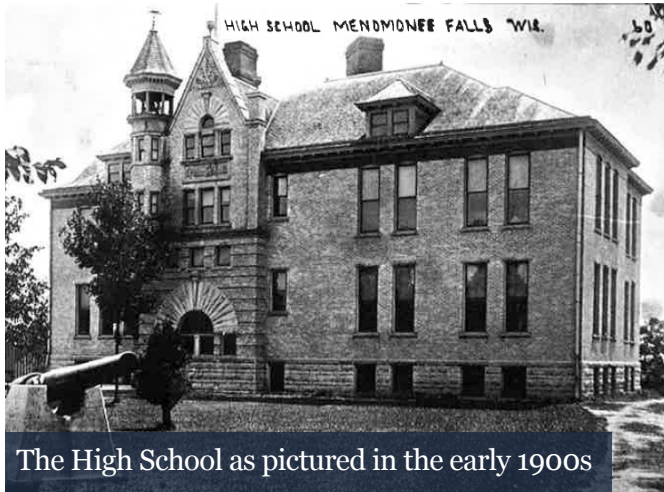


At the Dawn of Modernity



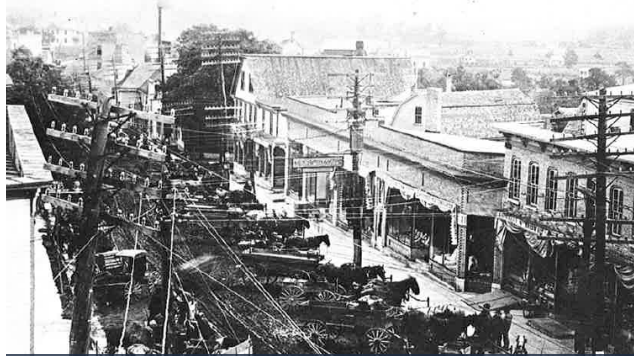
1902 Menomonee Falls-Hubertus-Holy Hill Telephone Company offers the first public telephone service in the Village – for several decades thereafter, the limited number of telephone lines are shared between several households and businesses

1906 Menomonee Falls Public Library is founded on the second floor of the recently built Fraser Block with a collection of 100 books acquired through the Wisconsin Free Library Commission (additional books were purchased through the efforts of local fundraising campaigns) – Maude Shunk is appointed as the Village's first librarian



The High School as pictured in the early 1900s

1907 A local electric plant offers a lighting alternative to kerosene lamps for the first time



Main Street on Fair Day with new overhead wires

1910 The Village begins installing water pipes

1912 John Wittlin builds a new garage near the Four Corners expanding his automobile sales and service center – a dozen automobiles are registered in the Village

1918-19 Concrete pavement is installed on Main Street and Fond du Lac Avenue (Appleton Avenue) for the first time

1919 A.A. Schmidt and Sons Funeral Home uses a motorized hearse for the first time – the vehicle doubles as an ambulance



Girls tennis team, 1913

1920s The first generation of businesses serving automobile travelers is developed (including Bast's 1-Stop Service Station, Schuman Motor Company and Klinger and Southern Motor Company) and 3 subdivisions are platted adding over 100 new residential lots

1922 Lincoln School is dedicated as a replacement to the building that burned in 1919 – the Menomonee Falls Public Library is housed within the school, and students from kindergarten through high school use the building with some traveling from as far away as Sussex, Jackson and Granville



New buildings and pavement on Fond du Lac Ave.

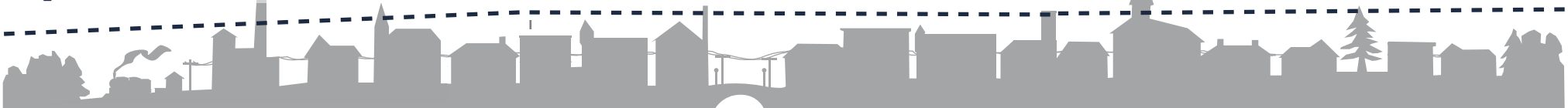
1924 The Village installs modern sewer lines from the Four Corners to a treatment plant on Arthur Avenue

Population (Town & Village combined)

3,302

3,194

3,227



1900

1910

1920

1930

Transforming into a Residential Suburb



The new Village Hall and Fire house, circa 1930

1930s A new municipal building on is constructed on Fond du Lac Avenue – the building houses Village offices, the Fire Department, the Police Department and the Menomonee Falls Public Library

1935 Village Park is built using federal Works Progress Administration funding

1937 Otto Schneider becomes the Village's first full-time police officer – his patrol area expands in 1938 with the construction of the Hiawatha Heights residential subdivision



Lincoln School

1940s Hiawatha Shopping Center becomes the first shopping area in the state with off-street parking – it is occupied by Kahn's Department Store, A&P grocery (later it will be occupied by Held's Recreation and Bowling Alley)

1941 The Falls Theater opens on Appleton Avenue replacing an older wooden theater that burned down in 1940



1943 The Village Board approves an ordinance requiring residents to observe blackout regulations to save energy and make the Village a less visible target for enemy aircraft during World War II

1949 The Menomonee Falls High School Band Revue is held for the first time

1951 The first wing of a new High School building is completed off Garfield Drive – additions are built throughout the 1950s and early 1960s to accomodate the growing student body



Looking north on Fond du Lac Avenue (Appleton)

1950s The Village of Menomonee Falls and the Town of Menomonee change rapidly via suburban residential development – 101 subdivisions and over 4,500 residential lots are platted and new homes increase the population by nearly 12,000 residents

1953 US 41 (now Interstate 41) is completed to the northeast of the Village enabling convenient access to the Milwaukee region

1957 The Town of Menomonee commissions a report to explore the governance options of the rapidly growing Town

1958 In a summer Village referendum, residents vote in favor of annexing the Town of Menomonee – starting in October, the Village annexes the Town through a total of 6 annexations in 91 days

Population (Town & Village combined)

3,674

6,262

18,276

1930

1940

1950

1960

Becoming a Regional Economic Center



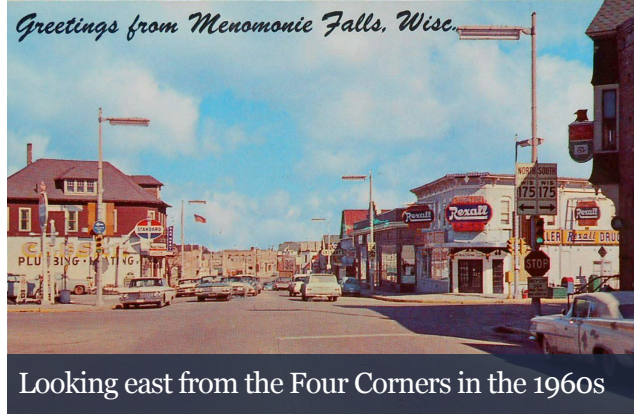
1959 In one year, an estimated 4,000 people move to Menomonee Falls and public school enrollment increases by 29 percent

1960 The Village commissions the creation of its first master plan, *A General Plan for Community Development*, to address the sustainable provision of services for Menomonee Falls' growing population – the plan recommends that the Village's population be limited to 60,000 before 1976

1962 Hamilton High School opens with a capacity for 3,000 students – it is one of six new public schools built to serve Village children in the 1960s

1967 A new Village Hall and Public Library are constructed along Pilgrim Road

1969 Menomonee Falls High School opens on Merrimac Drive



31,697

1970s The Village creates and promotes a new industrial park to the north of US 41/US 45 – in 1972, there are an estimated 9,200 jobs in the Village

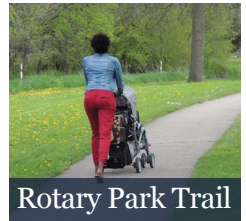
1973 The Village creates a Preservation of the Tamarack Swamp Committee which focuses on moving the wetland into public ownership



1975 The Village adopts the *1973 Menomonee Falls Master Plan Study* – the plan projects the Village's population will reach between 125,000 and 150,000 and recommends a highway bypass route through western Menomonee Falls

1980s The Village's Population continues a decline which began in the 1970s, but the community attracts many new businesses – by 1985 industrial uses utilize over twice the land area than they did in 1965 and an estimated 15,800 jobs are found in the Village

1980 The first *Comprehensive Outdoor Recreation Plan* is adopted by the Village to guide park and trail development



1986 The first large retail stores open at the intersection of County Line Road and Appleton Avenue

1988 The Community Development Authority is organized to promote investments which create jobs, enhance the local tax base and improve the community's quality of life



26,840



Milestones in Recent History

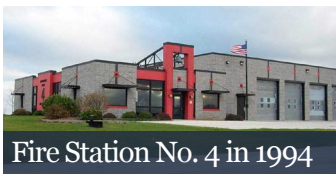


Some of the 1,984 new homes built in the 1990s

1990 Menomonee Falls adopts its first master plan for the historic downtown area and begins to brand the area as the Village Centre

Population

1992 The Village celebrates the 100th anniversary of incorporation with the dedication of Centennial Plaza at the Four Corners



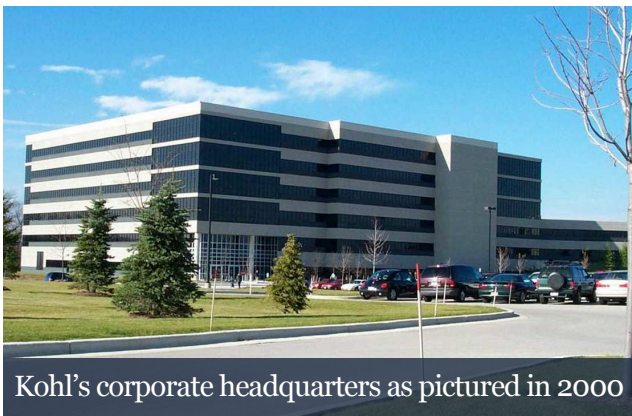
Fire Station No. 4 in 1994

1996 Silver Spring Corporate Park (Kohl's corporate headquarters) opens – an important part of this development is the installation of sanitary sewer through the southwestern area of the Village

1996-97 Oakwood Park and the Menomonee Falls Little League Complex are developed north of Mill Road and west of Lilly Road

2001-03 Village Hall and the Menomonee Falls Public Library are reconstructed along Pilgrim Road – the projects are funded through a combination of fundraising campaigns and tipping fees from the local landfill

2000s 27 subdivisions are platted adding over 1,000 new lots contributing to the Village's population growth



Kohl's corporate headquarters as pictured in 2000

2008 The Village adopts the *Menomonee Falls Comprehensive Plan* which is developed in compliance with Wisconsin Smart Growth planning legislation

2010 Urban land uses occupy 54 percent of the Village's land area



An aerial of the Whitestone Station redevelopment

2013 The former Stolper Steel facility along Pilgrim Road is redeveloped as a multi-tenant building with a fitness center and medical office

2010s The Village of Menomonee Falls continues to develop as a regional economic center – it is estimated that there are over 30,000 jobs in the community



Woodland Prime office park

2016 Hundreds of new apartments are built and more single family (and duplex) homes are built in Menomonee Falls than in Brookfield, Germantown and Sussex combined contributing to the continued growth for the Village

